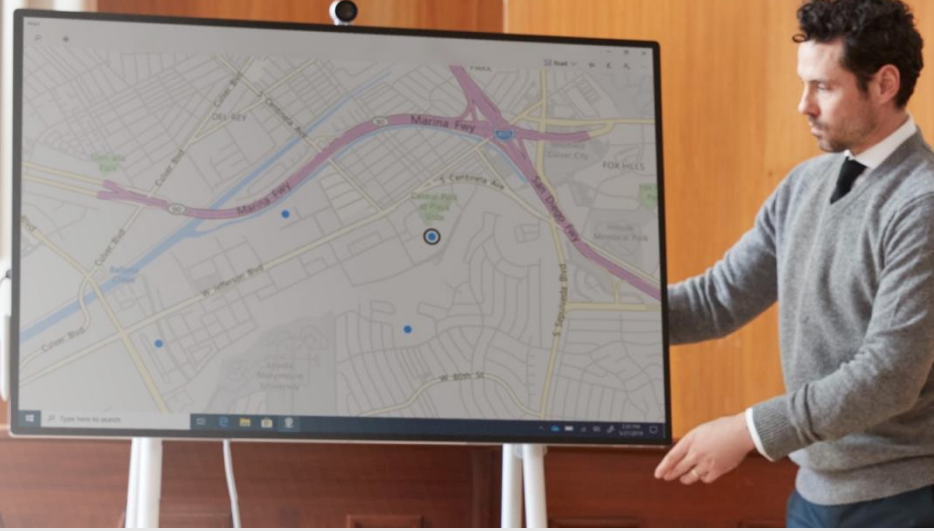


Teamwork without boundaries



Meet Surface Hub 2S for Federal

Bring remote teams together

Remote teamwork has never been easier with the light-weight, mobile Surface Hub 2S. Collaborate via Microsoft Teams, and stay engaged during meetings with a 4K+ quality screen and camera, along with enhanced speakers and mics. Take brainstorming to the next level with Microsoft Whiteboard, a persistent digital canvas. Surface helps you stay connected with your team, even when you're apart.



Work more securely, on your terms

The **Surface Enterprise Management Mode (SEMM)** tool allows you to physically disable components, such as WiFi, Bluetooth and ports, providing better security and flexibility.



Equipped for government use

Although Surface Hub 2S is designed as a multipurpose collaboration device used in conference rooms, the Surface Hub operating system actually supports users' ability to work with smart cards (CAC and PIV) to authenticate to corporate resources via the browser or the Office Graph. By taking advantage of plug-and-play devices and drivers, organizations can either leave a reader mounted to the device or add a keyboard with an integrated reader.





Support you can trust

Work without worries, knowing you can receive quick and reliable support through Microsoft's service partnership with ITG. Choose 3-year, 4-year, or 5-year onsite warranties w/Keep Your Hard Drive, receive support by the next business day, and remain in full compliance with regulations.



TECHNICAL DETAILS

| | | | |
|--------------------|---|--------------------------|---|
| Dimensions | 29.2" x 43.2" x 3.0" (741 mm x 1097 mm x 76 mm) | Audio/Video | Full range front facing 3-way stereo speakers Full band 8-element MEMS microphone array Microsoft Surface Hub 2 Camera, 4K, USB-C™ connection, 90 degree HFOV |
| Weight | 61.6 lbs. (28 kg) | Pen | Microsoft Surface Hub 2 Pen (active) |
| Resolution | 3840 x 2560 | Software | Windows 10 Microsoft Teams for Surface Hub ² Skype for Business ² Microsoft Whiteboard Microsoft Office (Mobile) Microsoft Power BI ² |
| Display | PixelSense™ Display, 3:2 aspect ratio, 10-bit color, 15.5 mm border, anti-glare, IPS LCD | Exterior | Casing: Precision machined aluminum with mineral-composite resin Color: Platinum Physical Buttons: Power, Volume, Source |
| Compute | Quad-core 8th Generation Intel® Core™ i5 processor, 8GB RAM, 128GB SSD ¹ | What's in the box | (1) Surface Hub 2S (1) Surface Hub 2 Pen (1) Surface Hub 2 Camera 3m AC Power Cable Quick Start Guide |
| Graphics | Intel® UHD 620 | Warranty | 1-year limited hardware warranty |
| Wireless | Wi-Fi 5 (IEEE 802.11 a/b/g/n/ac compatible) Bluetooth Wireless 4.1 technology Miracast Display | | |
| Connections | USB-A Mini-DisplayPort Video Output RJ45 Gigabit Ethernet HDMI Video Input USB-C™ with DisplayPort Input (4) USB-C™ (on display) | | |
| Sensors | Doppler occupancy sensor Accelerometer Gyroscope | | |



¹System software uses significant storage space. Available storage is subject to change based on system software updates and apps usage. 1 GB= 1 billion bytes. See [Surface.com/Storage](https://www.microsoft.com/surface/storage) for more details.

²Software license required for some features. Sold separately.